

NORTHWEST ARKANSAS METROPOLITAN FIRE CHIEFS NIMS – INCIDENT COMMAND SYSTEM HAZARDOUS MATERIALS SCENE REFERENCE CHART

Address/Location:	Business/Resident Name:
--------------------------	--------------------------------

- Incident Priorities**
- Life Safety
 - Incident Stabilization
 - Property Conservation

- Incident Benchmarks
(Notify Dispatch)**
- Additional Alarms or Resources Requested
 - Recon Group Deployed
 - Entry Group Deployed
 - Release Stopped
 - Situation Under Control
 - Notify Remediation Company
 - Command Terminated

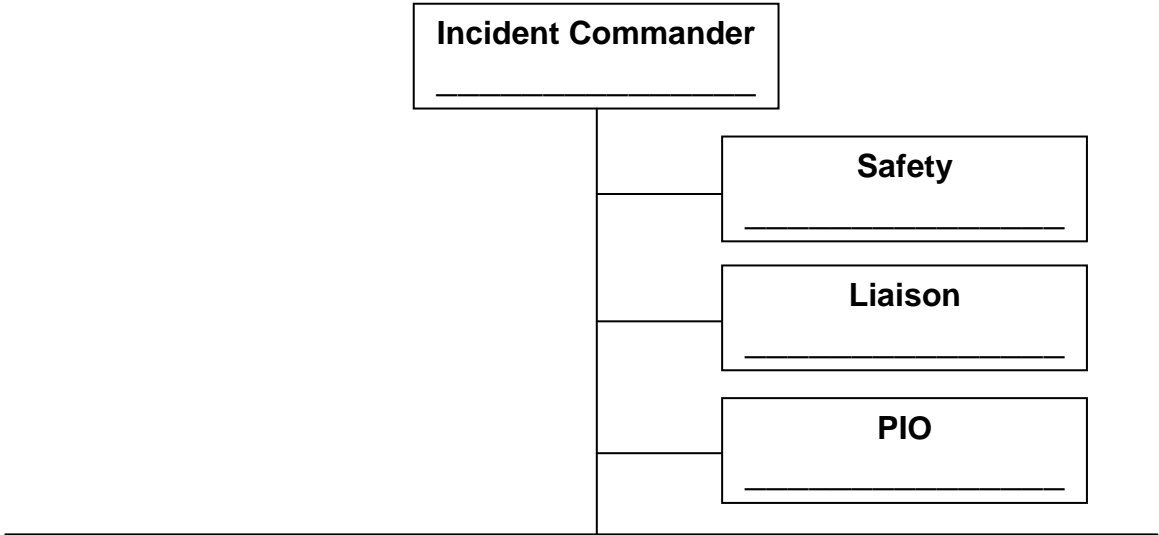
- Typical Incident Activities**
- Isolate the area, investigate from a distance
 - Gather information on the chemical and determine risk
 - Select PPE
 - Determine tactics necessary to solve problem
 - Conduct a Pre-Entry Briefing
 - Decontamination

- Haz-Mat ICS Groups and Divisions**
- | | | |
|---|---------------------|----------------------------|
| Recon Group | Entry Group | Rapid Intervention |
| Medical Group | Monitoring Group | Suppression Group |
| Rescue Group | Investigation Group | Ventilation Group |
| Exposure Group
(if geographical can be Exposure A,B,C,D) | Decon Group | Traffic Control Group (PD) |
| Haz-Mat Branch | Suppression Branch | Medical Branch |

- Strategic Goals**
- Isolate the Incident
 - Establish Control Zones
 - Rescue of Victims
 - Identify the Chemical(s)
 - Stop Release of Product
 - Extinguishment of fire (If Applicable)
 - Decontaminate Victims, Responders, Equipment

Resource List

E _____	E _____
E _____	E _____
E _____	E _____
E _____	E _____
L _____	L _____
C _____	C _____
R _____	R _____
OTHER _____	
OTHER _____	
OTHER _____	
OTHER _____	
OTHER _____	
OTHER _____	
OTHER _____	
OTHER _____	



- Identification Method**
1. Occupancy/Location
 2. Container/Shape
 3. Markings/Color
 4. Placards/Labels
 5. Shipping Papers
 6. Monitoring Equipment