

ROGERS FIRE DEPARTMENT
NIMS – INCIDENT COMMAND SYSTEM HIGHRISE FIRE REFERENCE CHART

Address/Location: _____

Business/Resident Name: _____

Incident Priorities

- Life Safety
- Incident Stabilization
- Property Conservation

**Incident Benchmarks
(Notify RCD)**

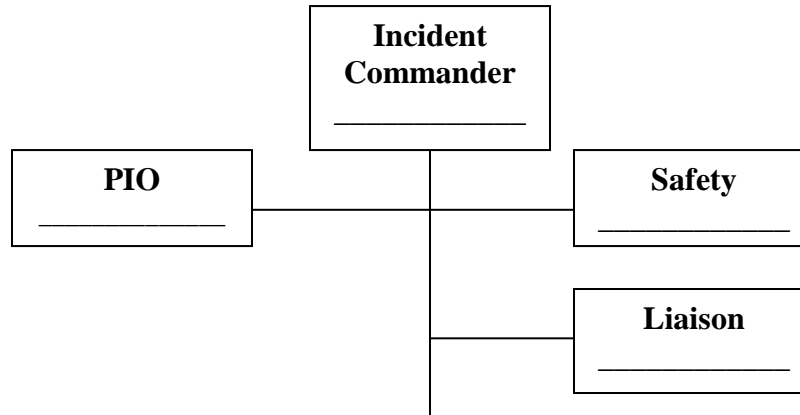
- Building owner/manager/
maintenance contacted
- Fire Floor Established
- Evacuation Stairwell
Established
- Attack Stairwell
Established
- Base Established
- Staging Established
- Situation under control
- Command Terminated

Strategic Goals

- Determine appropriate strategy
- Establish overall incident objectives
- Setting priorities
- Develop an IAP
- Obtaining and assigning resources
- Predict outcome and plan
- Assign objectives to tactical level units
- Provide for the safety, accountability, and welfare of personnel.

ICS Common Groups and Divisions

Division ____ (Fire Floor)	Staging	Ventilation
Division ____ (Floor above fire floor)	Base	Evacuation
Medical Group/Branch	Lobby Control Unit	Rehabilitation
Upper Search and Rescue Group	Systems Control Unit	
Rapid Intervention Group	Stairway Support Group	
Safety		



Resource List

Standard First Alarm

E____ E____
 E____
 L____ L____
 M____ BC____

Standard Second Alarm

E____ E____
 BC____ BC____
 TD____ TD____
 TD____ TD____

Standard Third Alarm

E____ E____
 RR____ RR____

Standard Fourth Alarm

E____ E____
 E____ E____
 FD____ FD____
 OTHER_____
 OTHER_____
 OTHER_____

Incident Accountability

Division/Group: _____ PAR?

Division/Group: _____ PAR?

Division/Group: _____ PAR?

Division/Group: _____ PAR?

Division/Group: _____ PAR?

Division/Group: _____ PAR?

Communication Plan

Incident Action Plan

Situation:

Current
Predicted

Incident Objectives:

Current
Alternate

Execution:

Groups/Unit				
Task				

Communication Matrix

City	Channel - Portable	Channel Mobile
Bella Vista	Zone B; Channel 9	Zone B; Channel 9
Bentonville	Zone B; Channel 1	Zone B; Channel 1
Fayetteville		
Lowell	Zone B; Channel 10	Zone B; Channel 10
Siloam Springs		
Springdale	Zone B; Channel 11	Zone B; Channel 11
TAC 1	Zone B; Channel 12	Zone B; Channel 12
TAC 2	Zone B; Channel 13	Zone B; Channel 13
Benton County		
Southwest	Zone B; Channel 3	Zone B; Channel 3
Southeast	Zone B; Channel 2	Zone B; Channel 2
Northwest	Zone B; Channel 5	Zone B; Channel 5
Northeast	Zone B; Channel 4	Zone B; Channel 4
TAC 1	Zone B; Channel 6	Zone B; Channel 6
TAC 2	Zone B; Channel 7	Zone B; Channel 7
TAC 3	Zone B; Channel 8	Zone B; Channel 8
Hospital		
Mercy	Zone C; Channel 1	
NWMC BC	Zone C; Channel 2	
NWMC WC	Zone C; Channel 3	
WRMC	Zone c; Channel 4	

