

NORTHWEST ARKANSAS METROPOLITAN FIRE CHIEFS NIMS – INCIDENT COMMAND SYSTEM ACTIVE SHOOTER / HOSTILE EVENT RESPONSE TACTICAL WORKSHEET

Address/Location:	Business/Resident Name:
--------------------------	--------------------------------

Incident Priorities

Life Safety

Incident Stabilization

Property Conservation

Incident Benchmarks (Notify Dispatch)

Additional Alarms or Resources Requested

Major Emergency / MCI Declared

Staging Location Established

Unified Command Established with LE

Contact Team Deployed

RTF Deployed

Casualty Collection Point Established

Command Terminated

Typical Incident Activities

Understand Scope of the Incident

Establish Contact with Venue Representative

Establish Emergency Evacuation Procedures

Engage with LE to form RTFs

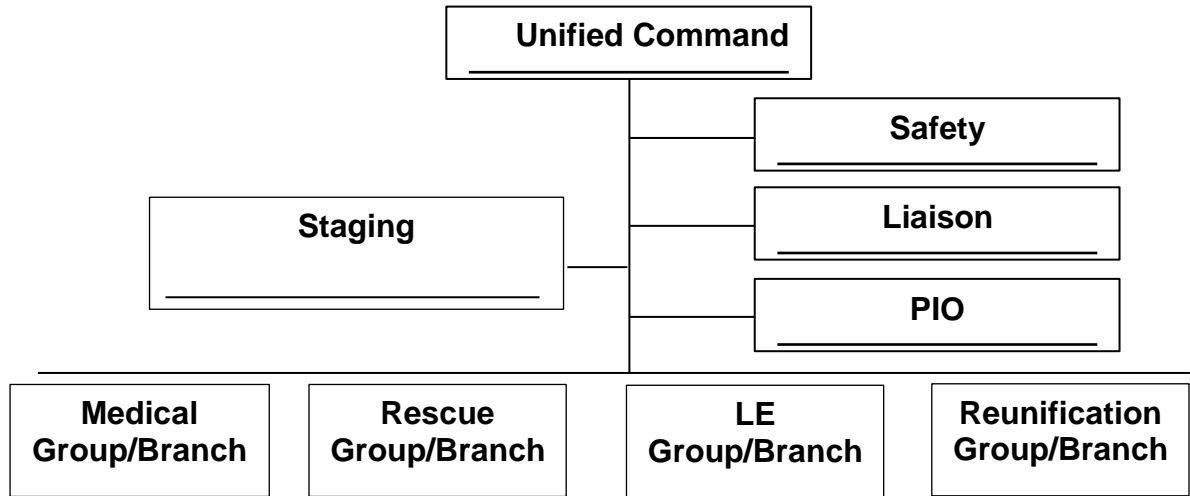
Reunification Procedures (Move Location)

Active Shooter ICS Groups and Divisions

Medical Group/Branch -Triage Unit -Treatment Unit -Transport Unit	Rescue Group/Branch -Rescue Task Force (RTF) (e.g. RTF 1, RTF2, etc) Reunification Group/Branch	Law Enforcement Branch -Contact Team -Perimeter Group -Intelligence/Investigations
--	--	---

Strategic Goals

- Isolate the Incident
- Establish Control Zones
- Stop the Killing (Law)
- Rescue Victims (RTF)
- Stop the Dying (EMS)
- Manage Bystanders
- Aggressive PIO / Social Media
- Hospital Support



Resource List

E _____	E _____
E _____	E _____
E _____	E _____
E _____	E _____
E _____	E _____
L _____	L _____
C _____	C _____
R _____	R _____
M _____	M _____
M _____	M _____
M _____	M _____
M _____	M _____
M _____	M _____
M _____	M _____
M _____	M _____
M _____	M _____

Considerations

1. Scene Security
2. Staging Area Manager
3. School/Transit Buses
4. Recall Off Duty Members
5. Extensive Mutual Aid
6. Peer Support Team

Communications Plan

1. Rescue Group and Medical Group should remain on one talkgroup or channel
2. Law Enforcement Group should remain on a different talkgroup channel
3. Incident Command activities should utilize a different channel to communicate with dispatch centers and manage ICS functions.
4. Consider MAC or Regional Mutual Aid channels

Three radio channels or talkgroups MINIMUM for incident

Division/Group: _____ PAR?

Division/Group: _____ PAR?

Division/Group: _____ PAR?

Division/Group: _____ PAR?

Division/Group: _____ PAR?

Division/Group: _____ PAR?

Communications Information

Agency by Dispatch Point	Primary Comms	Secondary Comms	Notes
Bella Vista	Kenwood Digital UHF	UHF Conventional	AWINS Limited
Bentonville	Motorola Digital UHF	UHF Conventional	AWINS Limited
Benton County Depts	AWIN P25	800/700 Conv	
Fayetteville	AWIN P25	UHF Conv	800/800 Conv
Lowell	AWIN P25	UHF Conv	
Siloam Springs	AWIN P25		
Springdale	AWIN P25	800/700 Conv	
Rogers	AWIN P25	800/700 Conv	Can Patch to UHF
Washington County Depts	AWIN P25	UHF Conventional	

Necessary Information on Shooters

1. Location of active shooters?
2. Number of shooters?
3. Do we have LE or security on site?
4. Physical description of shooter(s)?
5. Type and number of weapons used?
6. Use or threat of explosives or IEDs?

Evacuation Question

1. Have primary and secondary escape routes been identified?
2. What is the population of the building?
3. Once outside of the building, are escape routes safe and of a reasonable distance?
4. Consider the use of buses to house evacuees and move them for reunification.

Reunification Protocol

1. Assign to school personnel or other non-public safety official
2. Locate nearby but do not create another incident (security issues with PD)
3. Ensure students are identified and accounted for with their name, grade, DOB, address, and other identifying information
4. Person picking up students need name, phone number, relationship to student verify with photo ID. Must know student name and DOB
5. Communicate plan on social media – lack of information will cause panic

Public Information / JICS (Joint Information Center)

1. It is imperative that police/fire/schools (if applicable) work together for information being released.
2. A press gathering should take place AWAY from the incident to minimize impact.
3. Work with social media on a coordinated approach to disseminating information.
4. Ensure families of any wounded or deceased persons are made aware prior to releasing any information/specifics.

Mental Health

1. Victims/evacuees should be debriefed before being released.
2. Victims/evacuees should understand normal reactions to violence and encouraged to seek mental health.
3. Responders should be formally debriefed/defused.